

The South Dakota  
School of Mines and  
Technology  
is the perfect place to stay  
during the  
28<sup>th</sup> Annual  
Meeting of the  
Society for the  
Preservation of  
Natural  
History  
Collections

For More Information,  
Contact:

**Summer Housing**

Phone: (605) 394-6774

Monday - Friday

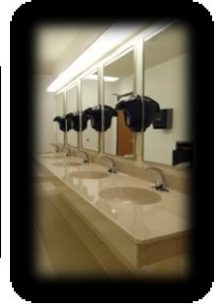
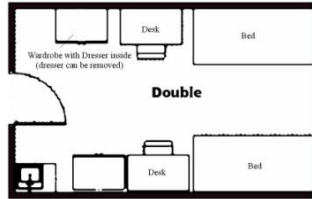
7:30 a.m. - 4:00 p.m.

summerconferencing@sdsmt.edu

**Silver Package – Peterson Hall**

Bathrooms down the hall  
(max of 2 people per room)

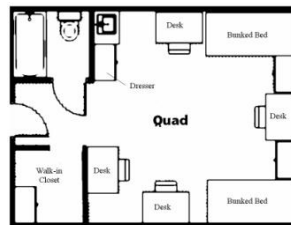
\$35.00



**Gold Package – Peterson Hall**

In room bath, bunked beds  
(max of 4 people per room)

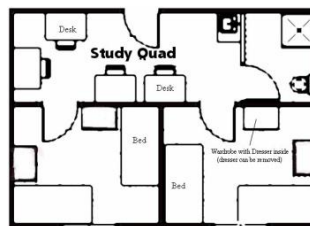
\$85.00



**Platinum Package – Peterson Hall**

In-room bath, private bedrooms  
(max of 4 people per room)

\$95.00



Prices listed are per room, per day and include linen. Prices are applicable to group billing (not individual); maximum occupancy for each style room is listed in parentheses. Prices do not include applicable SD state sales tax.

**Just a few reminders . . .**

- Alcohol and illegal drugs are prohibited on campus. This includes possession and consumption.
- Persons less than 18 years of age must be supervised by an adult (over 21) while staying on campus.
- All residence hall entrances are locked 24 hours a day for added safety and security. You will be issued a key card for access to the buildings and individual rooms (room keys if you are staying in Palmerton or Connolly halls).